

PRECISION USB TEMPERATURE ACQUISITION SYSTEM

- ACCURACY +/- 0.1°C (0-100°C)
- CUSTOM PROBE AND CABLE CONFIGURATION
- NIST TRACEABLE
- DATA LOGGING AND ALERT NOTIFICATION SOFTWARE INCLUDED
- ABLE TO RUN MULTIPLE SENSORS



USB Probe Windows driver installation instructions

Table of Contents:

A – Windows XP installation instructions

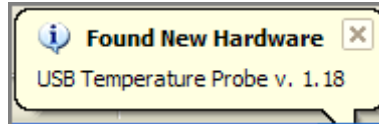
B – Windows Vista installation instructions

C – Windows 2000 installation instructions

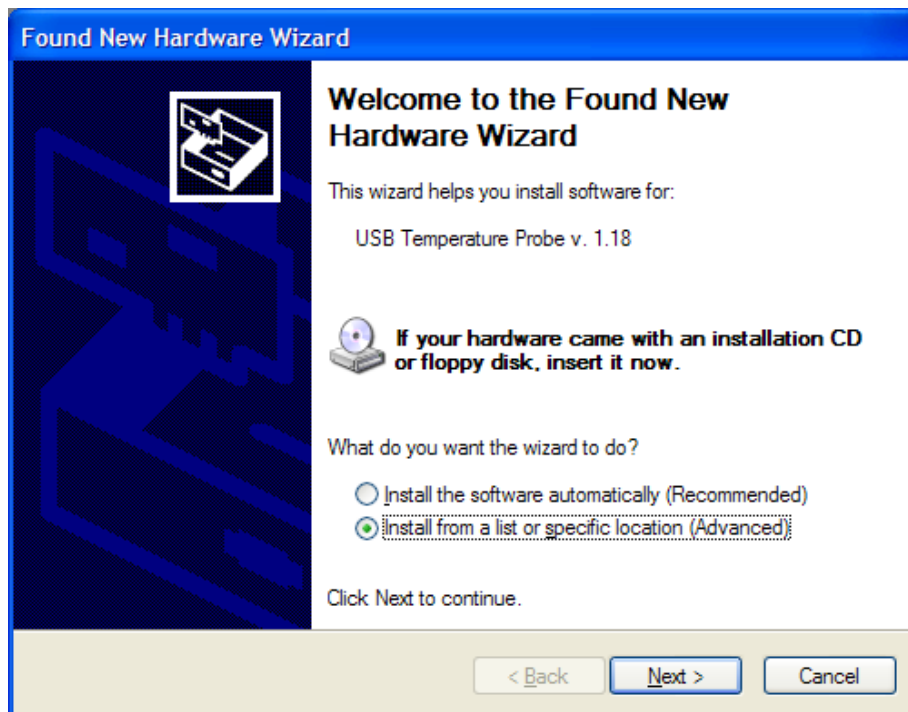


A – Windows XP installation instructions

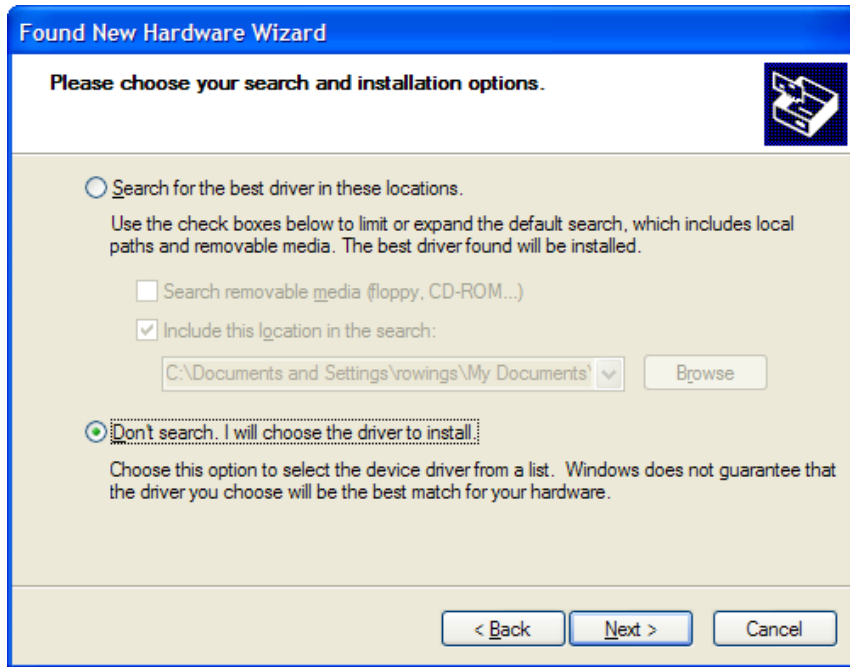
1. Connect the probe to the PC USB port.
2. Install the windows driver by following the prompts below. You should see a notification from windows XP like this:



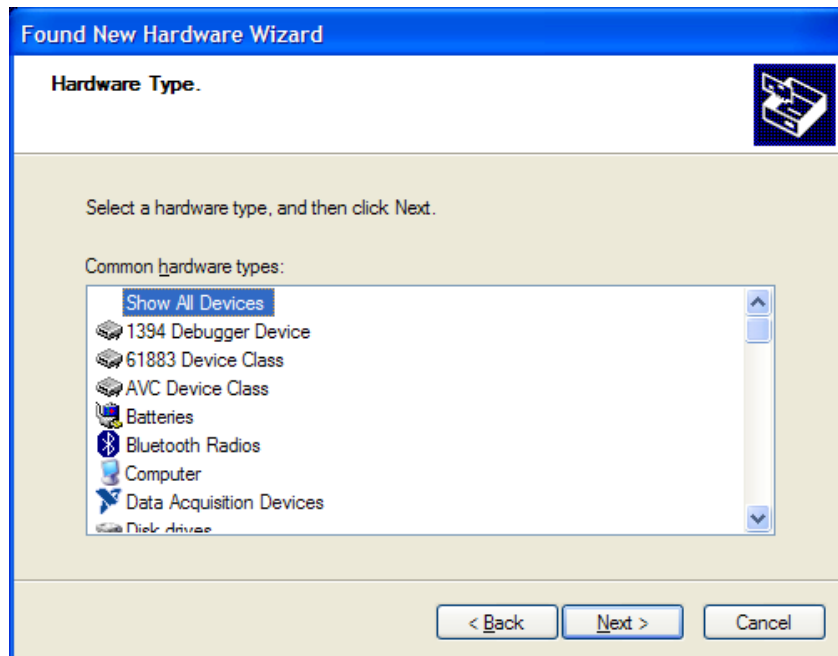
- a. Select INSTALL FROM A LIST option as seen below and click NEXT



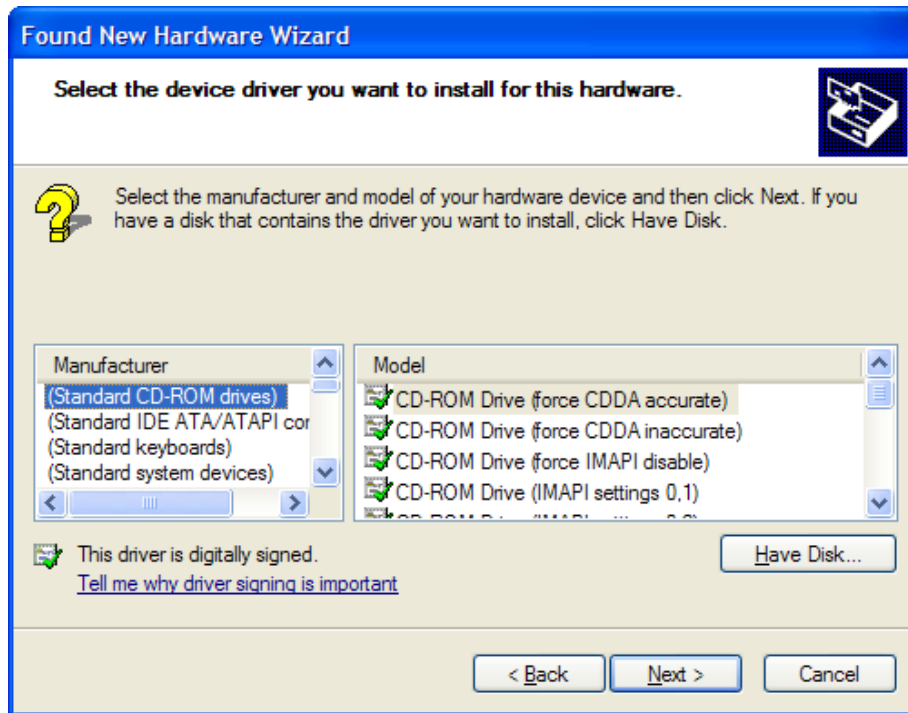
b. Select DON'T SEARCH and click NEXT.



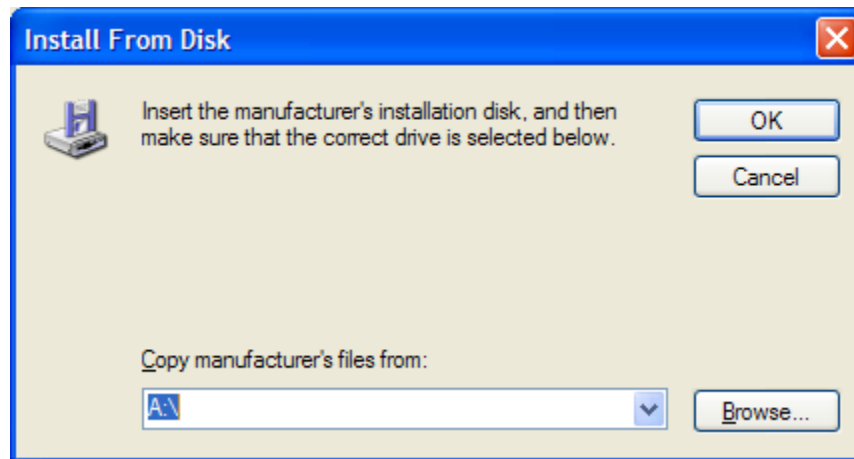
c. Select SHOW ALL DEVICES and click NEXT



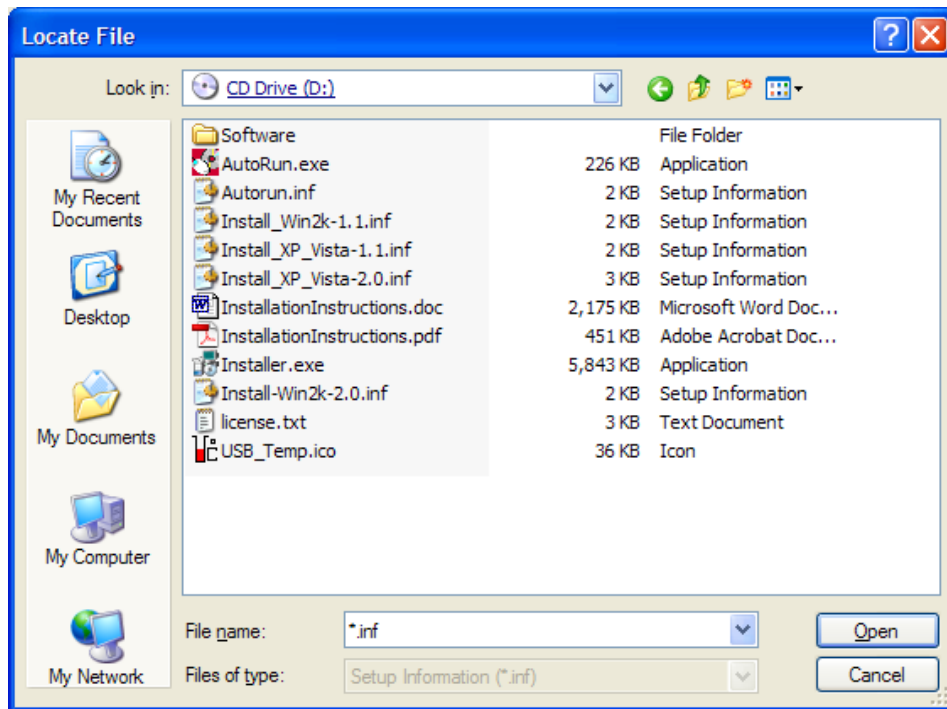
d. Click on HAVE DISK.



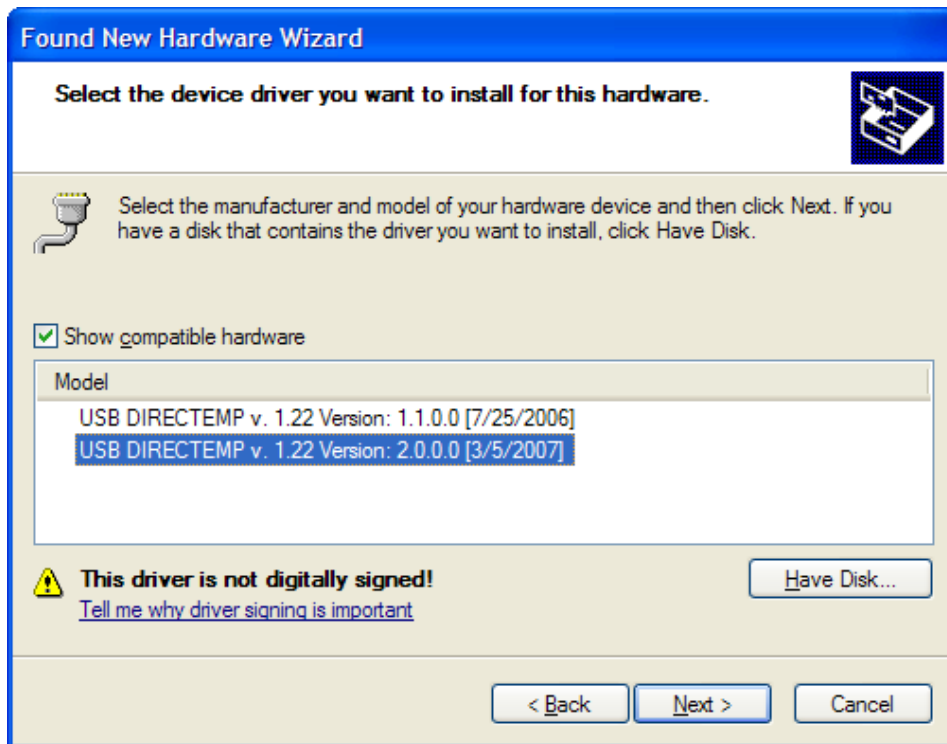
e. Select BROWSE



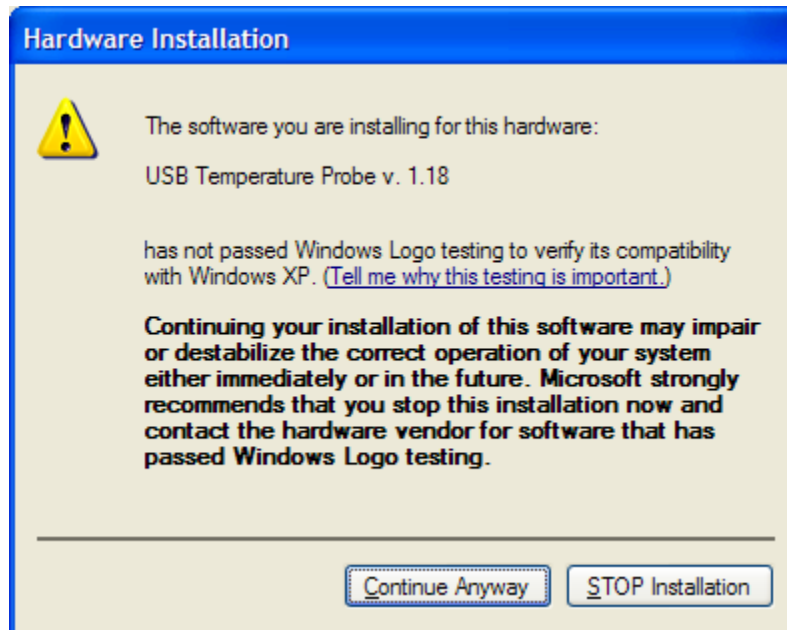
f. Navigate to the directory where the auto run file is found and select open. A particular file need not be selected. The folder is most important.



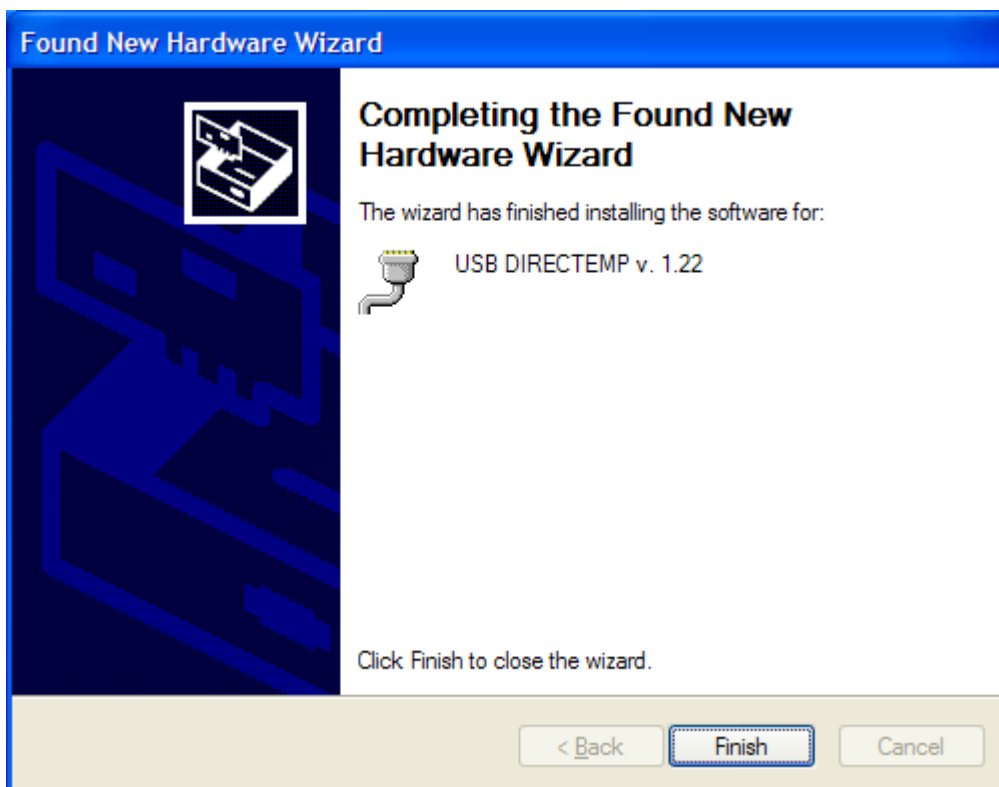
g. Select either of the listed probe drivers.



g. When this prompt pops up, click **CONTINUE ANYWAY**



h. Select FINISH when final box says so. The probe is now ready to measure.



3. Select Menu item # 2 from the CD runtime menu to install the measurement software

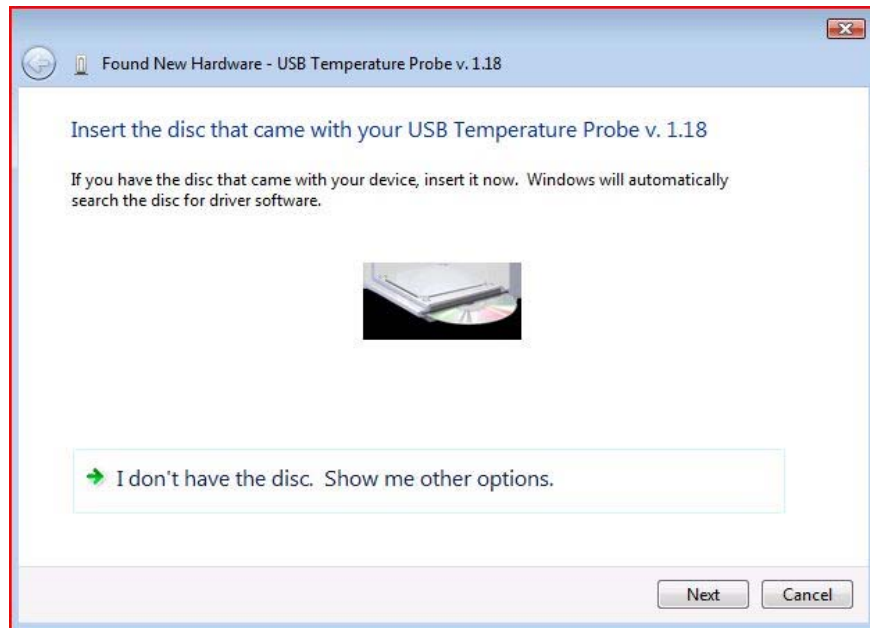
4. If the measurement software does not run, then your system requires the updated java runtime environment (JRE). Please select menu item #4 from the CD menu to start installation of the JRE.

B - Windows Vista installation instructions

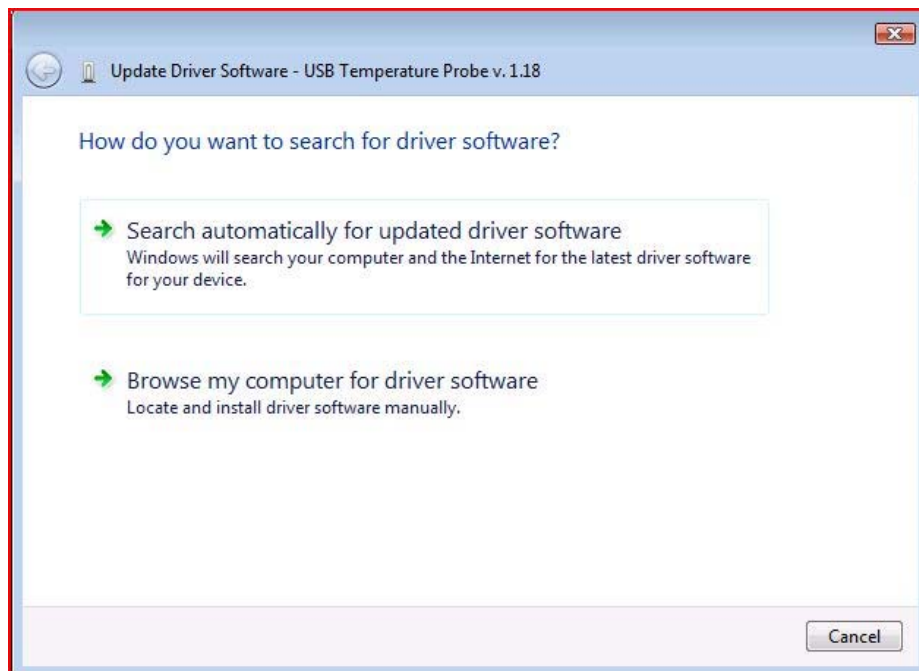
1. Connect the probe to the PC USB port.
2. Install the windows driver by following the prompts below. You should see a notification from Windows Vista like this:
 - a. Select Locate and install driver software. Any time you see the prompt for permission to continue, please select continue, continue anyway, or ok.



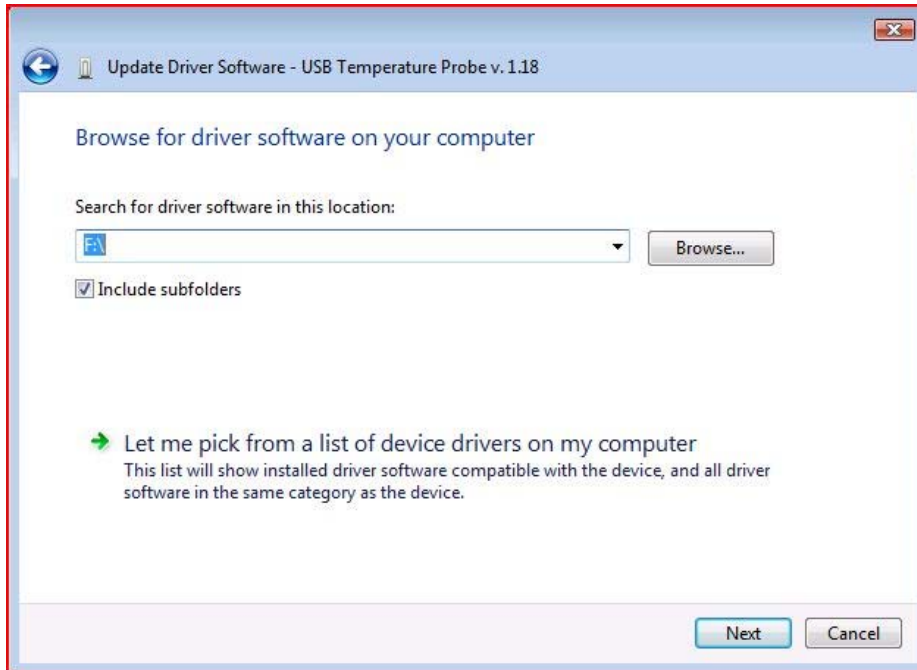
b. Select Next



c. Select browse my computer for driver software



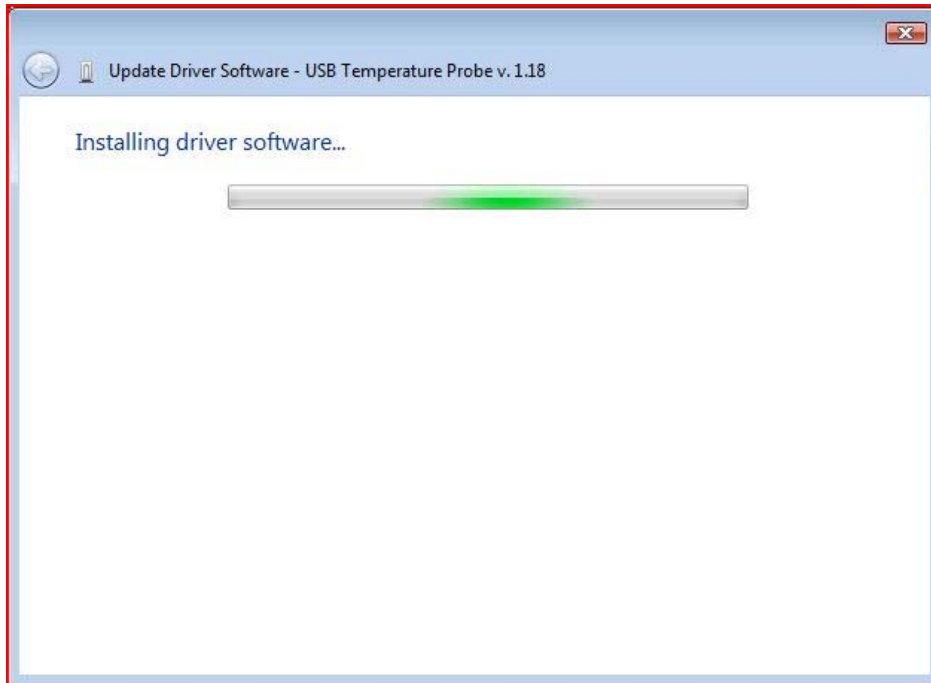
d. Click on the browse button and find the CD drive with the installation disk



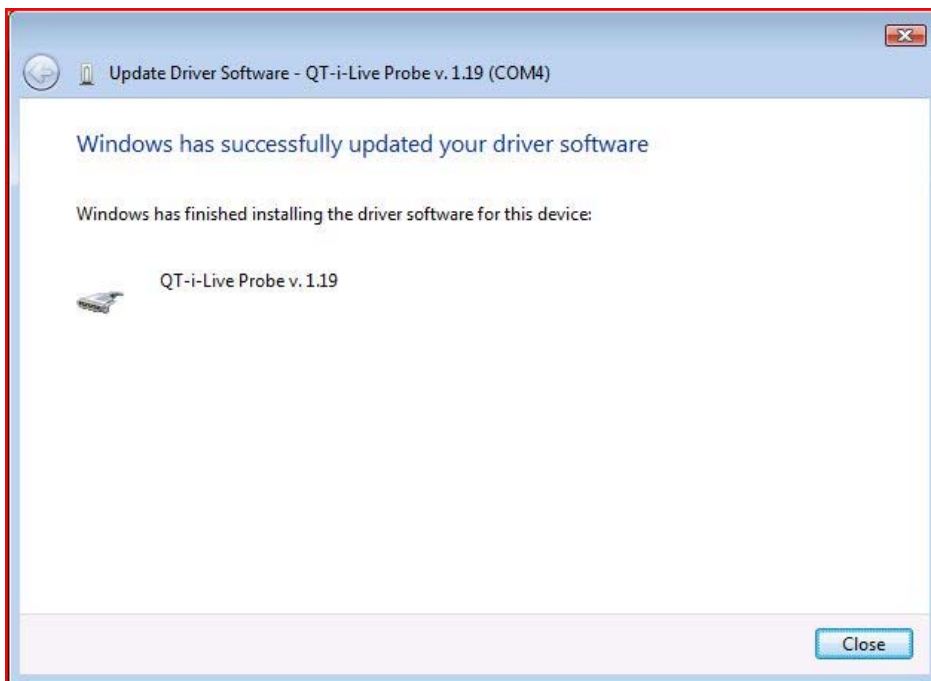
e. If windows security requires verification, select install driver anyway.



f. The driver should proceed to install.



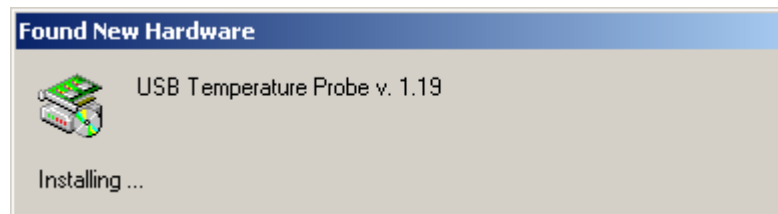
g. Click close when the driver installation is complete



3. Press the "Install Software" button on the CD installation menu.
4. Press the "copy Java library" button on the CD installation menu.
5. If Java runtime environment 1.6.0_05 is not installed on the PC, then select the "Install Java Run Time Environment ver. 1.6.0_05"
6. Run the Measurement program by clicking on the start menu. Select Temperature Probe and click on the .jar file.

C - Windows 2000 installation instructions

1. Connect the probe to the PC USB port.
2. Install the Window driver by following the prompts below.
Windows 2000 will indicate new hardware and after searching, will prompt for more information to install the driver



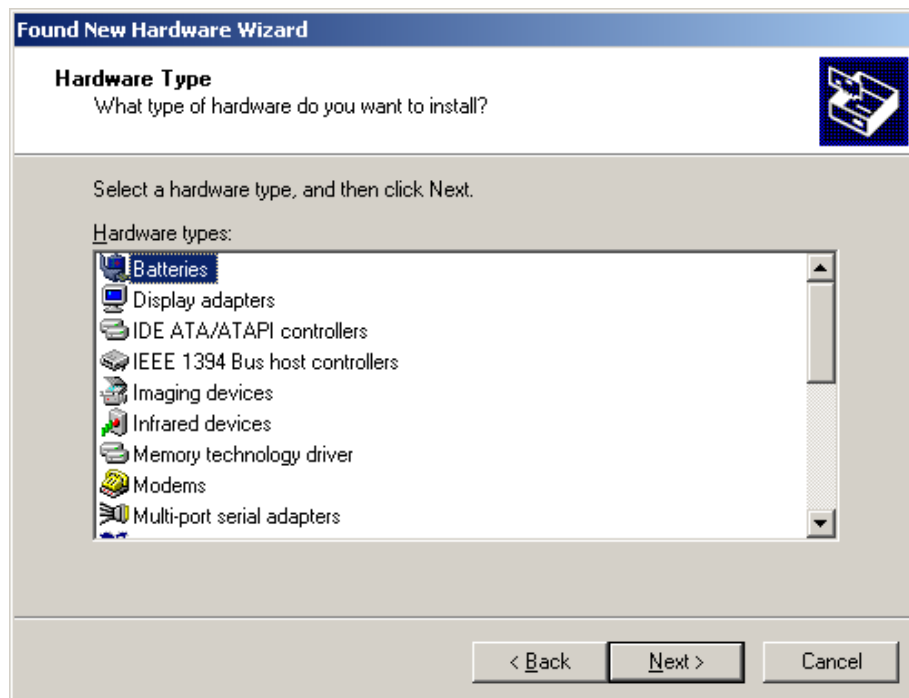
- a. Press Next



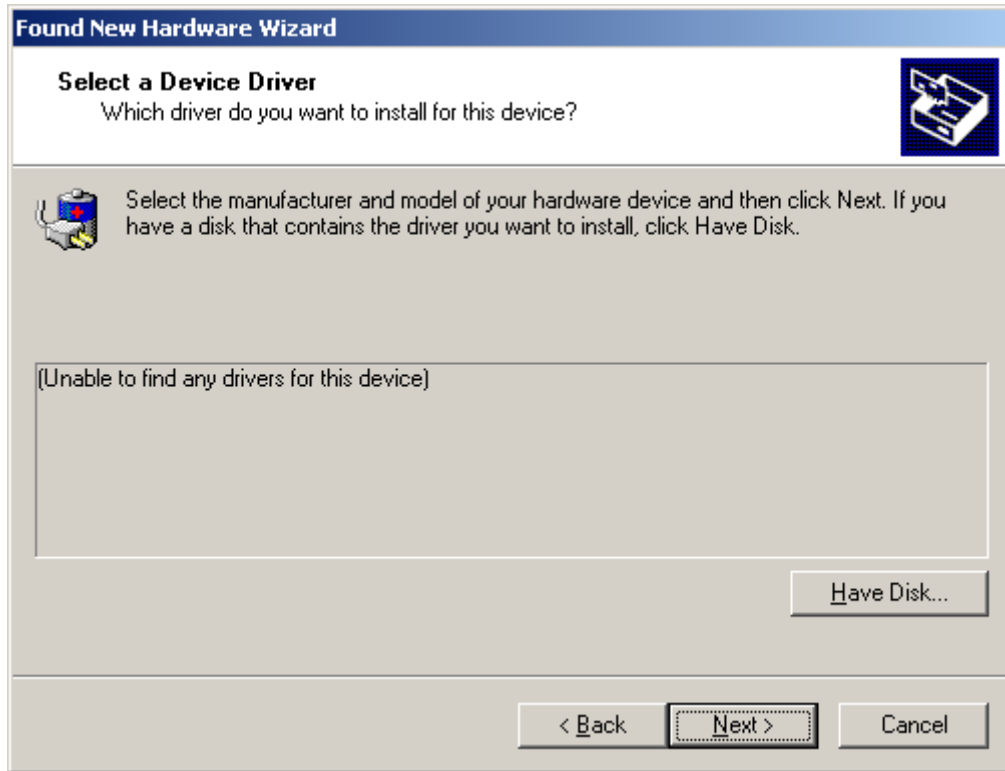
b. Select "Display a list" option and press next



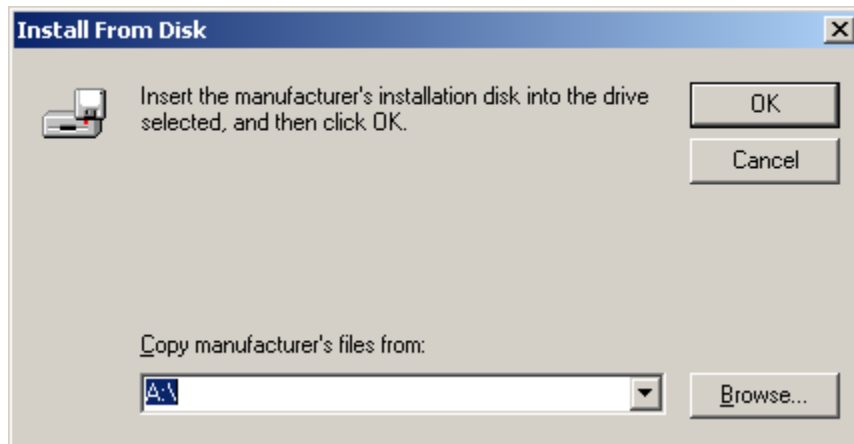
c. Select a category if you like. It does not matter. Click Next.



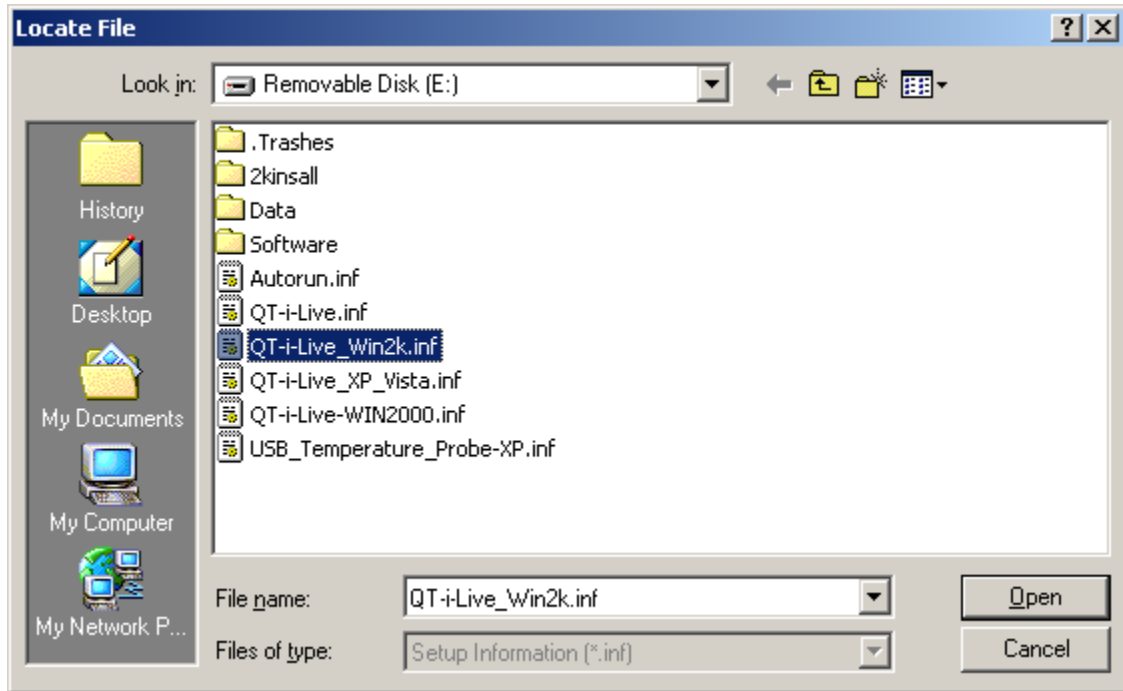
d. Click on the "Have Disk" button:



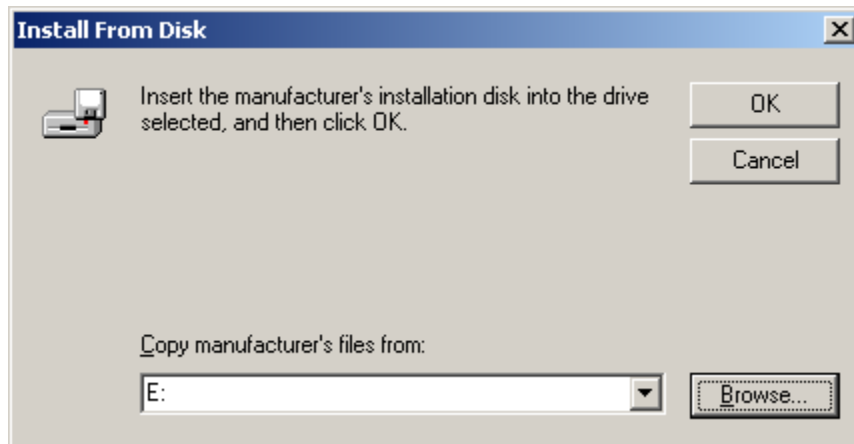
e. Click Browse:



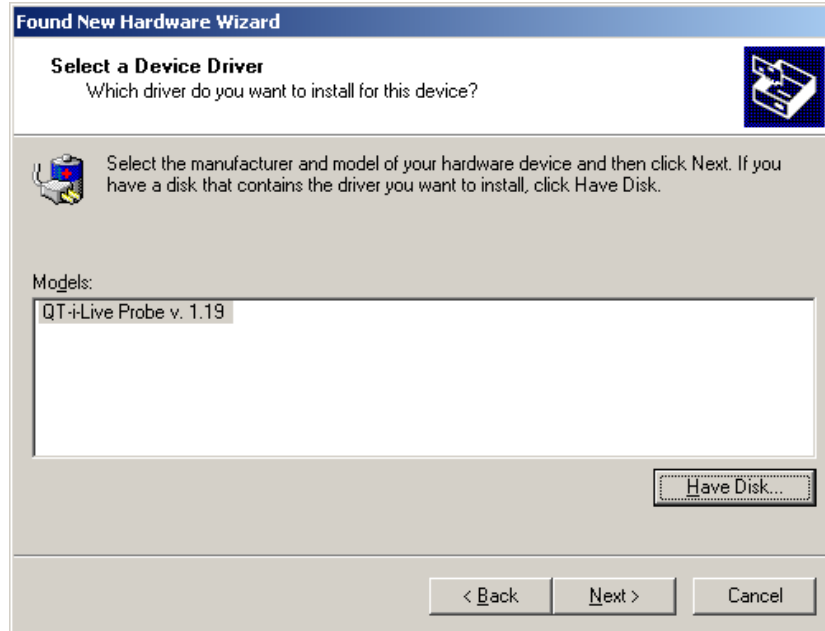
f. Select the disk that has the driver, in this case it is drive E. If you select the wrong INF file, it may throw an error indicating that your driver is not found. Select the folder, not the file. Select Open



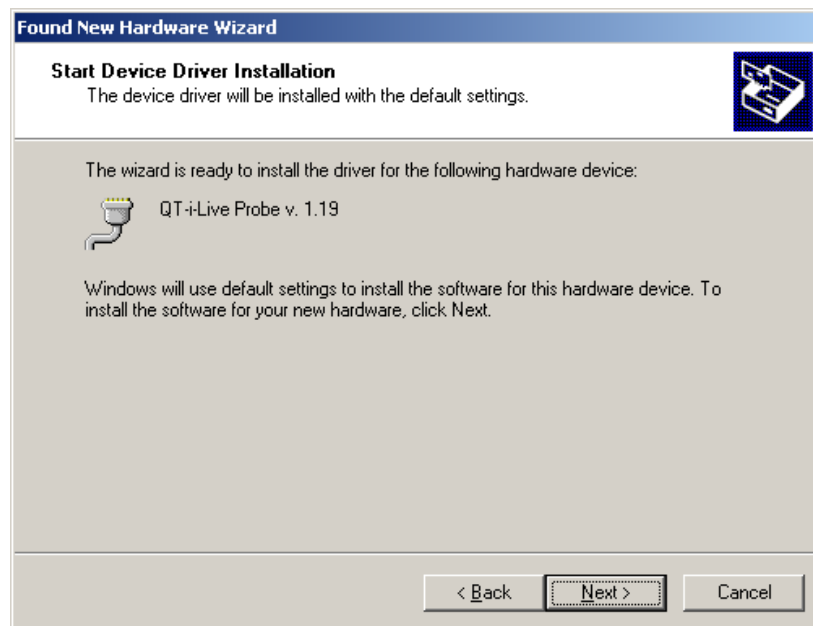
g. Select OK



h. The driver is now available. Select the probe v. x.xx line so it is highlighted. You may have several that show up. Pick any one of them. They will install the same driver file. The difference in numbering is the internal probe firmware, not the driver. Select Next.



i. Installation is almost complete, press Next



j. Installation is complete. Press Finish and probe is now ready to communicate to your PC.



3. Now press the "Install Software" button on the CD installation menu.
4. If Java runtime environment 1.6.0_05 is not installed on the PC, then select the "Install Java Run Time Environment ver. 1.6.0_05" from the CD installation menu
5. After installation, press the "Copy Java Library to Windows 2000" from the CD installation menu.